

**BOHDAN SEHIN**  
**БОГДАН СЕГІН**



**(without title)**

*for flute, cello and piano*

**(2001/2005/2009)**

# Bohdan Sehin

Богдан Сегін

\* \* \*

(without title)

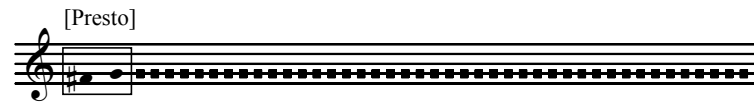
for flute, cello and piano

(2001/2005/2009)

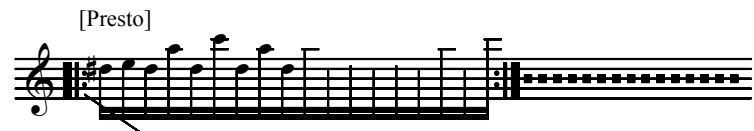
ca 9'

© Bohdan Sehin

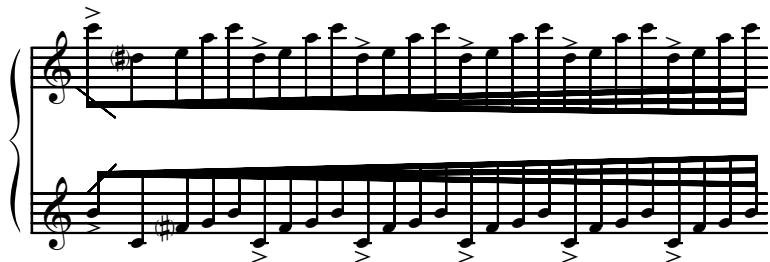
## Explanation of symbols



- Playing of the right,-and further,-left hand part consists in random, very quick repetition of sounds indicated in the frame.



- The combination of the number of notes: *dis, e, a, c*, is to be played very quickly, under the condition that the sound *dis* is repeated every second time.



- Gradually accelerate

\*\*\*  
(without title)  
for flute, cello and piano

bohdan sehlin  
(\*1976)

Senza metrum

Piano RH [Presto] *pp*

Ped. (sempre e una corda)

Flute *pp* *mp* *ppp*

Cello

~ 7" ~ 5" ~ 6" ~ 6" ~ 7" ~ 4"

Fl. *mp* *pp* *mp* *pp* *mp* *ppp*

Vc. *pp*

Pno. RH *pp*

Pno. LH [Presto] *pp*

~ 7" ~ 5" ~ 6" ~ 8" ~ 5" ~ 3"

~ 4"    ~ 5"    ~ 2"    ~ 7"    ~ 6"    ~ 7"

Fl. *pp* *mp* *p* *mf* *pp* *f* *p* gliss.

Vc. *pp* *mp* *p* *mf* *pp* *f* *p*

Pno. *f* *p*

~ 7"

^ Ped. (tre corde)

~ 5"    ~ 4"    ~ 3"    ~ 6"    ~ 3"    ~ 4"    ~ 2"    ~ 6"

Vc. *mf* *ppp* gliss.

Pno. *mf* poco a poco *dininuendo* *pp* *molto*

^ Ped. (poco a poco una corda) (poco a poco tre corde)

**A**  $\text{♩} = 60$

Fl.  $\text{pp}$   $\text{mf}$   $p$   $\text{pp}$

Vc.  $\sim 5''$

Pno.  $f$   $\text{pp}$

[Presto]

Ped. (una corda)  $\Delta$ Ped.  $\Delta$ Ped.

Fl.  $\text{sub. pp}$  poco a poco cresc.  $\text{sub. p}$   $\text{pp}$  molto  $f$

Vc.

Pno.  $f$

$\Delta$ Ped.  $\Delta$ Ped.  $\Delta$ Ped. (poco a poco tre corde)  $\Delta$

6 5 4 5 6 9

Fl. *mf* *sf* *p* *f* *gliss.* *gliss.*

Vc. *sfp*

Pno. RH *f*

Ped.



8

Senza metrum

Fl. *f* *ppp* *p* *~ 7''*

Vc. *ppp'* *~ 5''*

Pno. *f* *pp*

^ Ped. (una corda)

~ 10 "

**B**  
Presto

Pno.

— ^ Ped. (poco a poco tre corde) — poco a poco senza Ped.



Pno.



Pno.

lunga

crescendo

*ff*

ritard.

poco a poco con Ped.

**C**  
In metrum (Pesante)  $\text{♩} \sim 100$

Fl. **f** 12 • 11 • 10 • 7 •

Vc. **f** 10 •

Pno. RH **f**

Pno. LH

△ Ped

Fl. 10 • +1 • 12 •

Vc. **cresc. molto** **ff**

Pno. **cresc. molto** **ff**

△ Ped



# D (Con moto) $\text{♩} \sim 126$

5 4+1 3 1 6 7 2 1+1 1 3

Fl. *p* *sub.p* *sub.p* *sub.p* *mf*

Vc.

Pno. GP

2 1+1 1 2 1+1 4 6 3

Fl. *f* *mf cantabile*

Vc.

Pno. *f secco* *sub.p* *mf*

3 6 3 2 1+1 4

Fl. *tr*

Vc.

Pno. *p* *crescendo* 5 6 *f pesante*

Ped.  $\Delta$ Ped.  $\Delta$ Ped.  $\Delta$ Ped.  $\Delta$ Ped.  $\Delta$ Ped.

*f* 5 6 *mf*

*gliss.* *gliss.*

*f* *rallentando* *mf*

7 8va 7

*rallentando*

Ped.  $\Delta$  Ped.  $\Delta$  Ped.  $\Delta$

**E**  
Senza metrum  
~ 7"

Fl. *f* *gliss.*

Vc. *gliss. e poco sul pont.* ~ 9" *p* *ppp*

Pno. *ff* *pp* ~ 7" ~ 9"

$\Delta$ Ped. (una corda)

~ 10 "                      ~ 7 "                      ~ 9 "                      ~ 10 "

Fl. *pp* *mf* *pp* *mp* *ppp*

Vc. *v* *v* *v* *v*

Pno. *mp* *pp* ~ 7 "

≡

~ 9 "                      ~ 10 "

Pno. *molto ritenuto e diminuendo* *sf* *lunga* *lunga*

tre corde